



# Tough Call activity

L R F

2+ Players

5min+



## What they learn

Players learn coping strategies to use when they're put under pressure by their family or friends.



## How it works

Discuss how to respond to real-life scenarios that could breach licence conditions.



## Set-up

- 1x instruction card for facilitator
- 1x set of activity cards for facilitator

## Video instructions

Visit [community.drive.govt.nz/resource-hub](https://community.drive.govt.nz/resource-hub) to watch video instructions of how to use this activity.

## Extra copies

Visit [community.drive.govt.nz](https://community.drive.govt.nz) to find a digital version of this resource for reprinting.



## Answers

Standard question

**How should you respond? Why?**

Advanced question

**How could you avoid breaking the law?**

### **Favour for aunty**

Standard: No, can't drive without a supervisor.

Advanced: Walk/bike, take a supervisor.

### **Pub with dad**

Standard: No, supervisor can't be intoxicated.

Advanced: Call a taxi or someone to pick you up.

### **Quick school run**

Standard: No, can't drive with a passenger.

Advanced: Take someone who has held a full licence for at least 2 years.

### **Drinks with a mate**

Standard: No, zero alcohol limit under 20.

Advanced: Have a non-alcoholic drink, get a ride to the movie.

### **Driving lessons**

Standard: No, your mate doesn't have a licence and you can't drive with a passenger.

Advanced: Help them study for their learner theory test.

### **Ride to the party**

Standard: No, it's illegal and unsafe.

Advanced: Take an extra car, do a second run, call a taxi, take public transport.

### **Vehicle insurance**

Standard: No, insurance is not legally required but highly recommended.

Advanced: Look for cheaper or third-party insurance.

### **Partner drop-off**

Standard: Yes, you can take your partner as a passenger.

Advanced: It's ok to take your partner as a passenger without a supervisor.

### **Late shift**

Standard: No, can't solo drive after 10pm.

Advanced: Get someone to pick you up, or use public transport.

### **Checkpoint**

Standard: No, supervisor can't be intoxicated.

Advanced: There isn't another option.

### **Airport drop-off**

Standard: No, you can't speed at any time.

Advanced: See if they can check in online.

### **Brother in trouble**

Standard: No, you can't drive on a learner licence without a supervisor.

Advanced: Call a friend/family to give a lift.

### **Unwarranted**

Standard: No, it's illegal to drive an unwarranted vehicle and could be unsafe.

Advanced: Use someone else's vehicle that he can teach you in.

### **Ride after school**

Standard: No, can't take passengers.

Advanced: Tell your friend to wait for the bus.

### **The munchies**

Standard: No, it's illegal and unsafe to drive after taking drugs.

Advanced: Get takeaways delivered.

### **Helping mum**

Standard: No, it's illegal to drive without a licence.

Advanced: Suggest she pulls over while she feeds the baby.



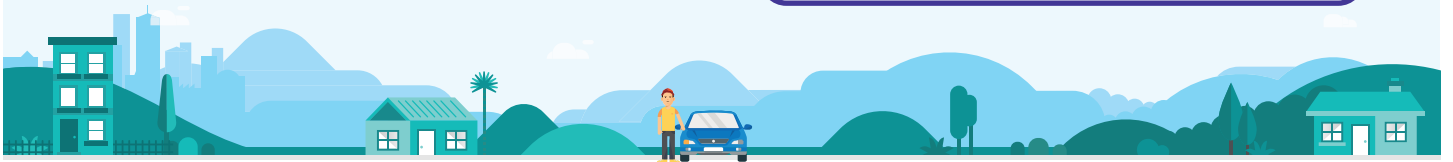
## Tough Call Instruction card

**DRIVE**  
COMMUNITY

Friends and family may ask you for favours that are against the legal conditions of your licence – especially when you're on your learner and restricted licences. It's really important to know what to do in those situations and how you should react.

### Instructions

1. The facilitator picks an activity card from the pile and reads it out to the class.
2. Either as a class or in teams, discuss what the appropriate response should be and why.
3. To test your problem-solving skills, answer the advanced question as well.



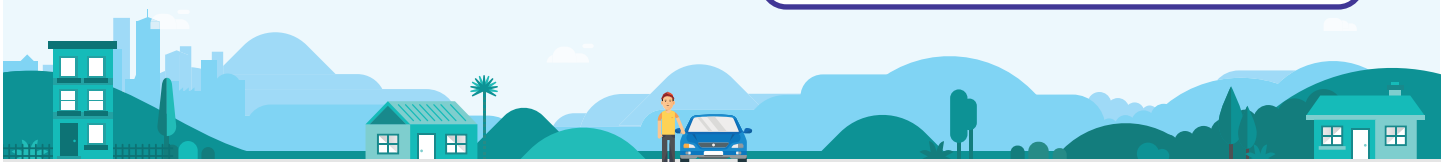
## Tough Call Instruction card

**DRIVE**  
COMMUNITY

Friends and family may ask you for favours that are against the legal conditions of your licence – especially when you're on your learner and restricted licences. It's really important to know what to do in those situations and how you should react.

### Instructions

1. The facilitator picks an activity card from the pile and reads it out to the class.
2. Either as a class or in teams, discuss what the appropriate response should be and why.
3. To test your problem-solving skills, answer the advanced question as well.





### Favour for aunty

You're a learner driver, watching TV at home. Your aunty asks you to pick up milk from the shop down the road. She needs it in a hurry, so suggests you take her car.

Standard question

**How should you respond? Why?**

Advanced question

**How could you avoid breaking the law?**

1



### Pub with dad

You're a restricted licence driver, at the pub with your dad. After 10pm he asks you if you'll be ok to drive him home because he's had too many drinks.

Standard question

**How should you respond? Why?**

Advanced question

**How could you avoid breaking the law?**

2



### Quick school run

You're a restricted licence driver, at home in the morning with your family. Your mum asks you to drop your sister off at school because she's running late for work.

Standard question

**How should you respond? Why?**

Advanced question

**How could you avoid breaking the law?**

3



### Drinks with a mate

You're a 19-year-old full licence driver, and have driven to your friend's to hang out before driving to a movie. Your mate asks if you want a beer from the fridge.

Standard question

**How should you respond? Why?**

Advanced question

**How could you avoid breaking the law?**

4



## Driving lessons

You're a restricted licence driver, hanging out with a friend who doesn't have a licence. They ask if you could help them practise their driving in the car park.

Standard question

**How should you respond? Why?**

Advanced question

**How could you avoid breaking the law?**

5



## Ride to the party

You're a full licence driver. You're driving a group of friends to a party but don't have enough seats in the car. They suggest someone rides in the boot.

Standard question

**How should you respond? Why?**

Advanced question

**How could you avoid breaking the law?**

6



## Vehicle insurance

You're a full licence driver and have been a little short of cash recently. Your dad asks why you don't just cut costs by cancelling your vehicle insurance.

Standard question

**How should you respond? Why?**

Advanced question

**How could you avoid breaking the law?**

7



## Partner drop-off

You're a restricted licence driver getting ready for work in the morning. Your partner, who doesn't have a licence, is running late and asks if you can drop them off at work.

Standard question

**How should you respond? Why?**

Advanced question

**How could you avoid breaking the law?**

8



### Late shift

You're a restricted licence driver who has a job you drive to after school. Your shift usually finishes at 9pm but your boss asks if you can work an extra hour to help out.

Standard question

**How should you respond? Why?**

Advanced question

**How could you avoid breaking the law?**

9



### Checkpoint

You're a learner licence driver. Your mum is driving you both home from a friend's where she has been drinking. There's a checkpoint up ahead and your mum asks if you can swap with her.

Standard question

**How should you respond? Why?**

Advanced question

**How could you avoid breaking the law?**

10



### Airport drop-off

You're a full licence driver giving your sister a ride to the airport. She realises she has the departure time wrong and tells you to exceed the speed limit or she'll miss the flight.

Standard question

**How should you respond? Why?**

Advanced question

**How could you avoid breaking the law?**

11



### Brother in trouble

You're a learner licence driver, chilling at home by yourself. You get a call that your little brother has got into a fight. He asks you to pick him up.

Standard question

**How should you respond? Why?**

Advanced question

**How could you avoid breaking the law?**

12



## Unwarranted

You're a learner licence driver. Your brother has had his full licence for over two years. He offers to give you some lessons in his car. He mentions it's unwarranted but still goes well.

Standard question

**How should you respond? Why?**

Advanced question

**How could you avoid breaking the law?**

13



## Ride after school

You're a restricted licence driver, about to drive home after school. Your friend, who doesn't have a licence, asks if you can give them a ride or they'll have to wait ages for a bus.

Standard question

**How should you respond? Why?**

Advanced question

**How could you avoid breaking the law?**

14



## The munchies

You're a full licence driver, hanging out with your mates after smoking a joint. Someone mentions they have the munchies and suggests you drive them all to get a feed.

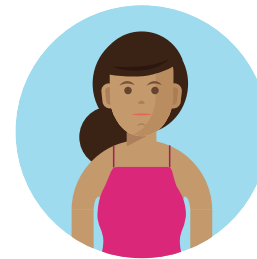
Standard question

**How should you respond? Why?**

Advanced question

**How could you avoid breaking the law?**

15



## Helping mum

You don't have your licence yet and are in the vehicle with your mum. She asks if you can take over driving while she breast feeds your little brother who's crying.

Standard question

**How should you respond? Why?**

Advanced question

**How could you avoid breaking the law?**

16